

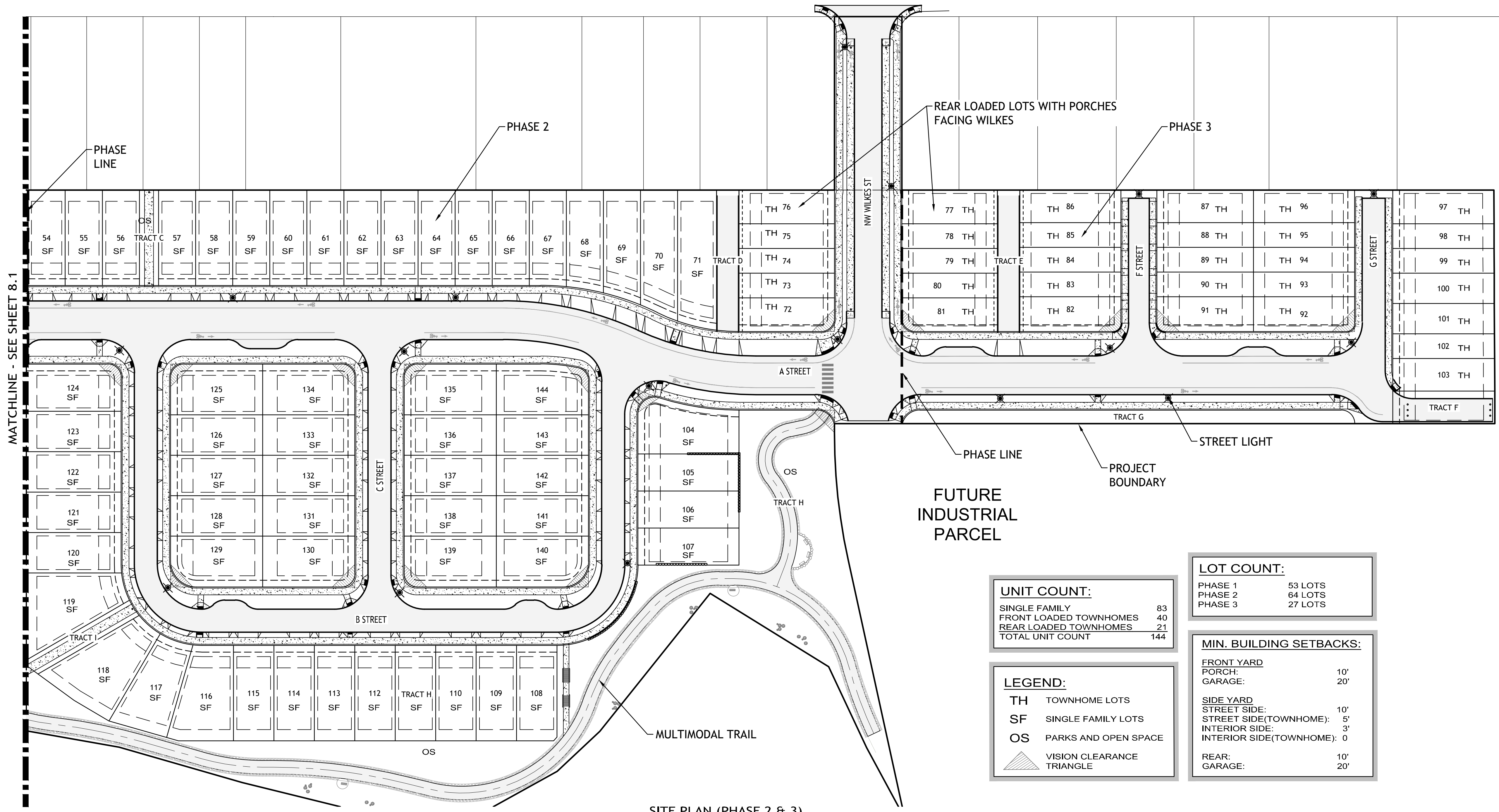


PACIFIC COMMUNITY DESIGN
12564 SW Main Street Tigard, OR 97223
[T] 503-941-9484

1ST SUBMITTAL DATE: 03/15/2024
2ND SUBMITTAL DATE: 05/03/2024
3RD SUBMITTAL DATE: 06/17/2024

REVISIONS

NO.	DATE	DESCRIPTION



UNIT COUNT:

SINGLE FAMILY	83
FRONT LOADED TOWNHOMES	40
REAR LOADED TOWNHOMES	21
TOTAL UNIT COUNT	144

LOT COUNT:

PHASE 1	53 LOTS
PHASE 2	64 LOTS
PHASE 3	27 LOTS

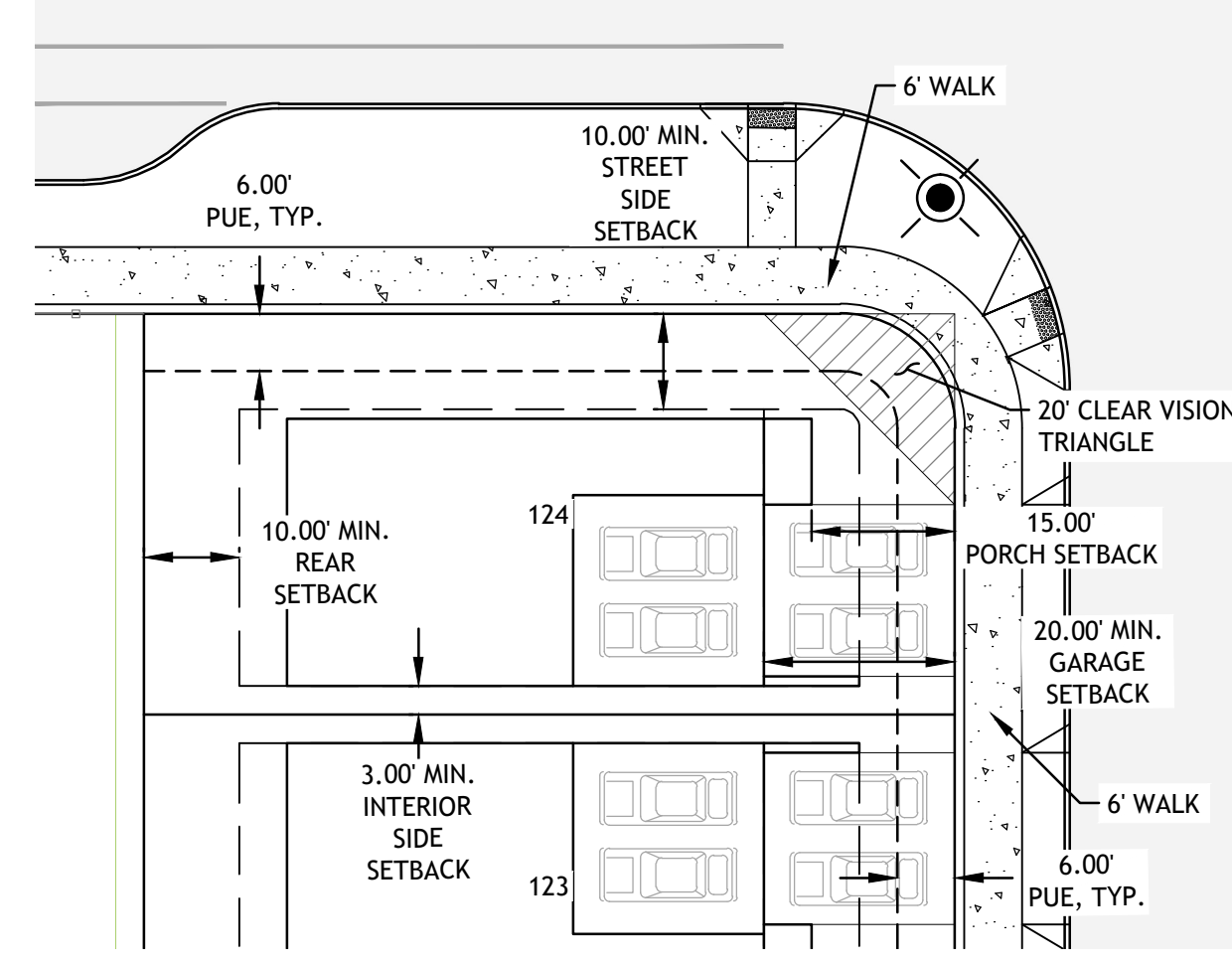
LEGEND:

- TH TOWNHOME LOTS
- SF SINGLE FAMILY LOTS
- OS PARKS AND OPEN SPACE
- VISION CLEARANCE TRIANGLE

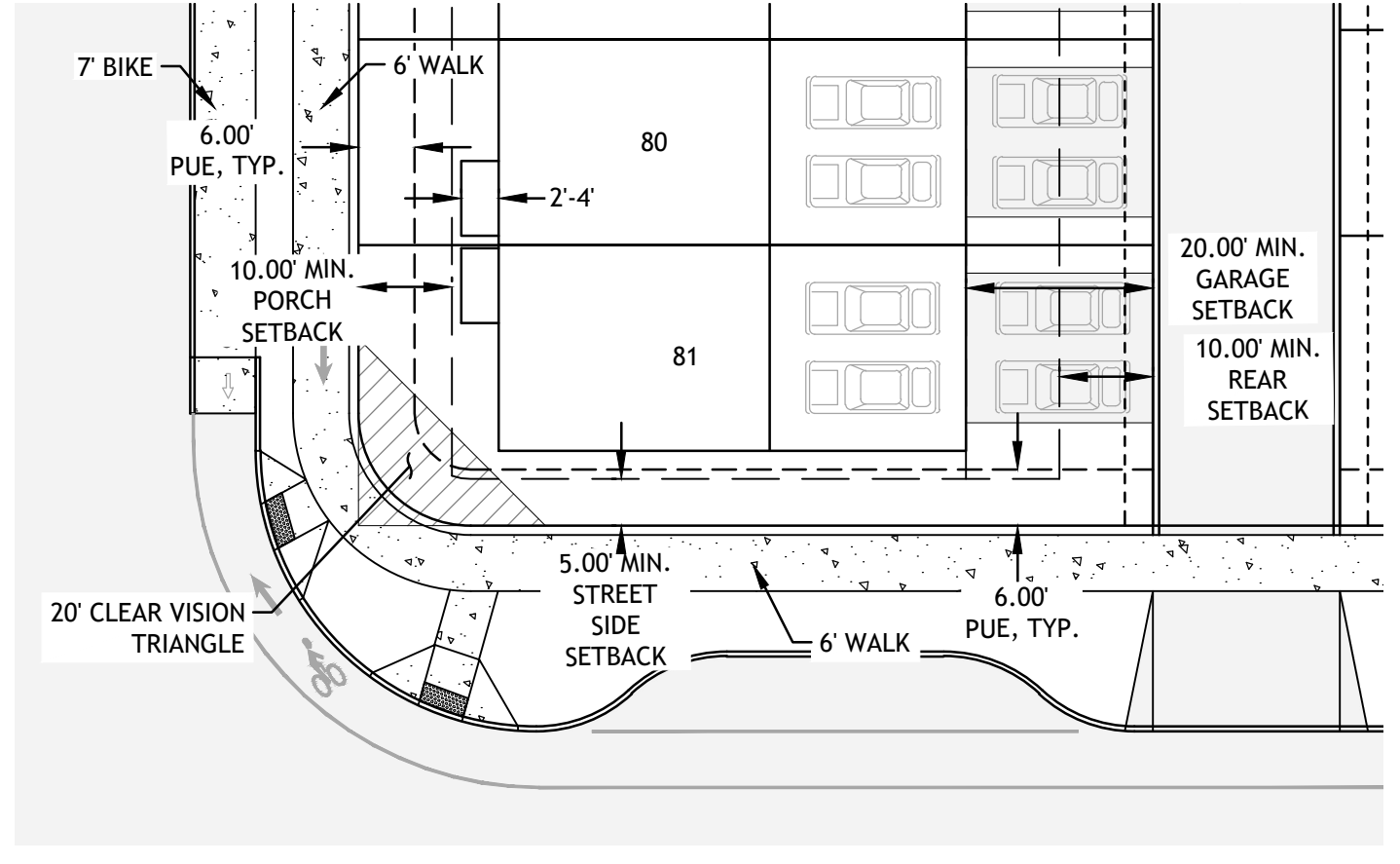
MIN. BUILDING SETBACKS:

FRONT YARD	10'
PORCH:	20'
GARAGE:	20'
SIDE YARD	10'
STREET SIDE:	10'
STREET SIDE(TOWNHOME):	5'
INTERIOR SIDE:	3'
INTERIOR SIDE(TOWNHOME):	0
REAR:	10'
GARAGE:	20'

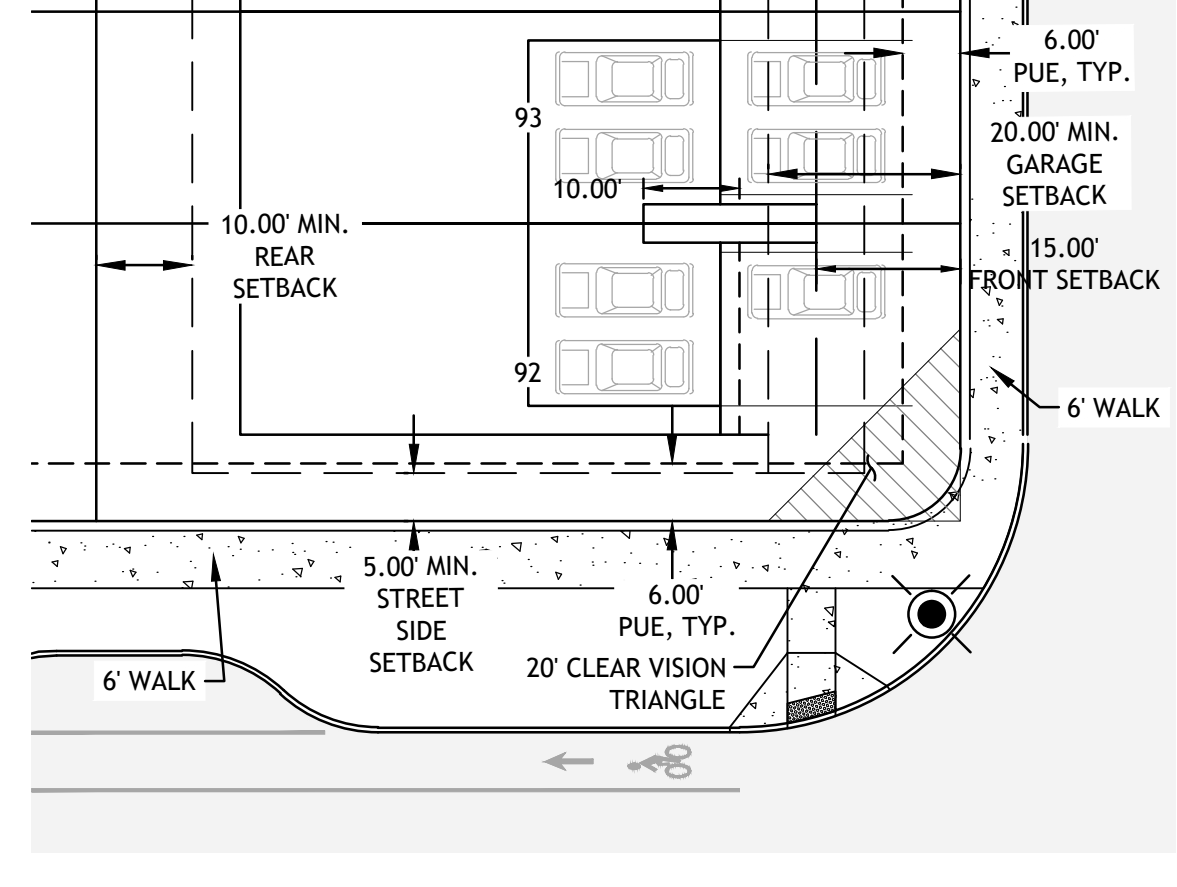
SITE PLAN (PHASE 2 & 3)



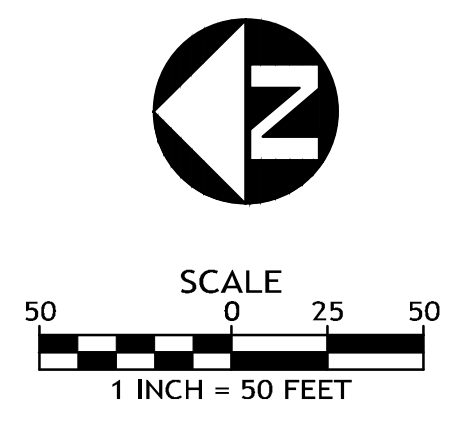
TYPICAL SINGLE FAMILY FRONT LOADED LOT
SCALE: 1" = 20'



TYPICAL TOWNHOME REAR LOADED LOT
SCALE: 1" = 20'



TYPICAL TOWNHOME FRONT LOADED LOT
SCALE: 1" = 20'



WEST BANKS

SITE PLAN (PHASE 2 & 3)

PROJECT NO.: 130-004
TYPE: PLANNING
REVIEWED BY: JMH

8.2

N:\proj\130-004\09 Drawings\03 Planning Sheets - Planning Submittal\130004_18 PSITE.dwg - SHEET: 8.2 Jul. 23. 24 - 4:31 PM brcan